

Saline Lectronics

Connected Factory – EMS High Mix/Low Volume

Cogiscan.com
sales@cogiscan.com



Objectives

- 1** Complete traceability on the material used on each PCBA, test results and required repair steps.
- 2** Real-time visibility of both raw materials and work-in-progress throughout the entire factory.
- 3** Error-proof line set-up and material availability levels during production in real-time.
- 4** Complete and seamless communication across the entire factory.



ELECTRONICS MANUFACTURING SERVICE

— an Emerald EMS Company

“This communication has not only drastically **saved precious time and labor hours**, but has also created **a better understanding of materials and workflow.**”

33%

Improved
Set-Up time

With Cogiscan’s real-time Inventory Tracking System, **Technicians are no longer wasting time looking for parts.**

33%

Time saved during
job changeovers

With offline set-up, **everything is validated before being loaded onto the machines.** Saline no longer loses time rearranging reels into the correct locations.

3X

Reduction in
defect rate

With enhanced machine control, **Saline’s machines aren’t allowed to run if a feeder is in the wrong location, or if an incorrect part number gets loaded on the trolley.**

+

Other
Improvements

Complete
M2M communication

Improved asset utilization and overall productivity

Saline Electronics

Connected Factory – EMS High Mix/Low Volume

Cogiscan.com
sales@cogiscan.com



Material Reception

Following reception, each component is assigned a **unique ID to enable tracking** throughout the entire **manufacturing process**.



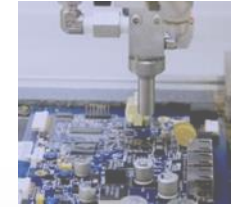
Intelligent Inventory

With the TTC System's Inventory Management, Saline has access to **real-time information** regarding the **location & quantity of each component**.



Automated Storage

With our software, **Saline's SMT lines are connected directly to the Juki Storage Towers** for automatic material replenishment.



360° PCBA Traceability

With factory-wide connectivity and traceability, **Saline is now positioned as a preferred EMS for high quality, reliable & valuable clients**.



Intelligent SMT Assembly

M2M Communication

In addition to automated storage, Saline uses Cogiscan's software to enable **complete & intelligent connectivity between all of their SMT machines**.

Alerting technicians

With Saline's SMT lines and Storage Towers directly linked, they are able to **proactively issue low-level alarms to alert technicians before line down**.



Set-Up & Changeover

Using **Cogiscan enabled smart feeders & kitting control application**, Saline is ensured to always have the right material, on the right feeder, at the right time. **Integrated through Juki's IFS-NX, which is powered by Cogiscan**